

Innovative Railway Safety Ltd
 Tŷ Penmynydd
 Llangennith
 Swansea
 SA3 1DT
 Tel: 07974 – 065798
 E-mail: paul@inrailsafe.co.uk
 Web site: www.inrailsafe.co.uk



RSS Magnetic Safety Barrier is a patented system and meets the safety requirements of the European standard EN 13374 class A.

See videos at: www.inrailsafe.co.uk



How does the Magnetically Attached Trench Safety Barrier work?

Erecting the system is a matter of a few steps:

- ❖ Click the stanchion using the magnet into the web of the rail
- ❖ Click the next stanchion into the web of the rail at a distance of about 3 metres
- ❖ Place the GRP handrail tube in the holder and attach the next tube with a simple patented interlocking system
- ❖ Repeat the steps above until the entire length of the working area has been secured

Dismantle in reverse:

The Magnetically Attached Trench Safety Barrier when working on the track

Employees that perform engineering work on the track must be able to work in total safety. A fence needs to screen the area being worked from the track on which trains are still running.

- ❖ The RSS Railway Safety System has been tested by HHC/DRS Inspecties B.V. and certified to EN 13374 (Class A), the industry directive RLN0077-V004 July 2010 and the Health & Safety regulation 3.16 of The Netherlands Ministry of Social Affairs & Employment
- ❖ The magnet is very strong (tensile force up to 600 Kg/N) and cannot be pulled off
- ❖ Easy dismantling with one arm movement, using the patented head attachment
- ❖ Stanchions made of high-quality galvanized steel – handrails in GRP

Benefits of the Magnetic Safety Barrier

The RSS Railway Safety System consists of only two components

- ❖ The RSS Railway Safety System has been tested by HHC/DRS Inspecties B.V. and **certified to EN 13374 (Class A)**, and is **approved by Network Rail PA05 05085**
- ❖ **No loose** components
- ❖ **No tools** needed
- ❖ **No** danger of **damaging underground signalling cables**
- ❖ **Allows tamping & ballast cleaning** to continue whilst in-situ
- ❖ Very **strong magnet** (tensile force up to 600 Kg/N)
- ❖ **Easy dismantling** with one arm movement
- ❖ **Does NOT affect track circuits or Axle counters**
- ❖ **Can be used in areas with S & C**
- ❖ **Safe to use**, with no **hazardous pathogens or 'Silica Ballast Dust'** generated.
- ❖ **Safe and fast assembly/disassembly**, with a simple magnetic attachment to the web of the rail, with **no removal or replacement of ballast** and thus a **major saving in working and possession costs** (within a Safe System of work can be erected in a line-blockage – 100m/15mins)
- ❖ Can be **used in freezing temperatures** (to-20°C) **with frozen ballast** or in **high temperatures** (to+80°C) when **'track distortion'** is an issue.



The patented **Magnetically Attached Safety Barrier is easy to use and will therefore, be used!**



Magnetic Safety Barrier wins Rail-Tech Europe Innovation Award 2011

At the Rail-Tech Europe 2011 trade fair in Amersfoort, RSS B.V. won the **European Innovation Gold Award** - Sustainable fence system with magnet voted most innovative product presented to Mr Jan Bakker, CEO of Rail Safety Systems (RSS) in Venlo.

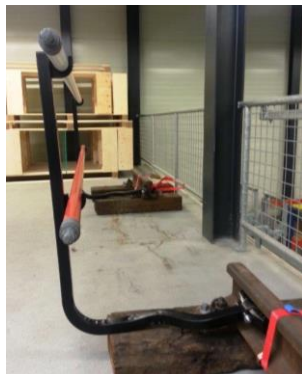
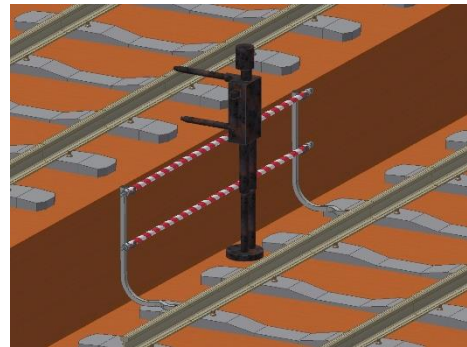
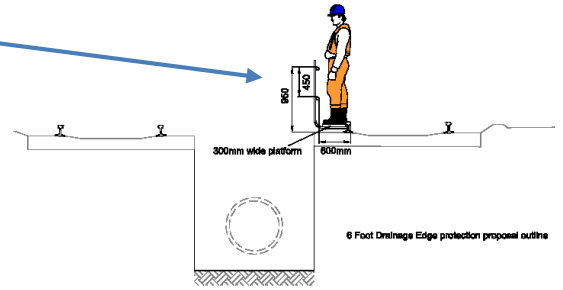
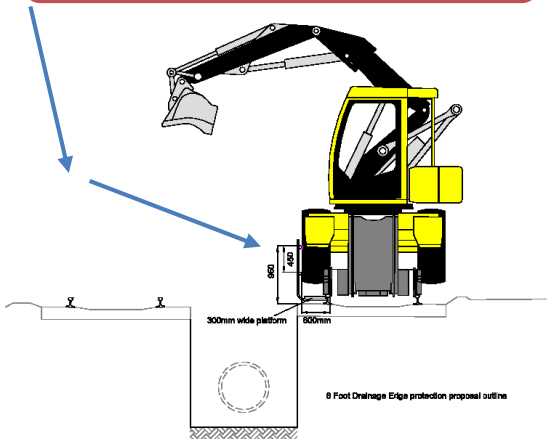


*The RSS Safety Barrier also won two awards
Railtex 2013:
 Best Product contributing to Health and Safety
 Best Track and Infrastructure Maintenance Product*



at

Edge protection for Trench Digging



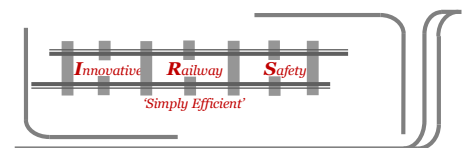
Patented 'Quick Locking' Handrail Connections



UK Plain Blue

Rail Safety Systems
 De Sondert 24,
 5928 RV
 Venlo

Exclusive GB & Éire Agent:



Innovative Railway Safety Ltd
 Tŷ Penrynnydd, Llangennith, Swansea. SA3 1DT
 Tel: 07974 - 065798
 E-mail: paul@inrailsafe.co.uk
 Web site: www.inrailsafe.co.uk